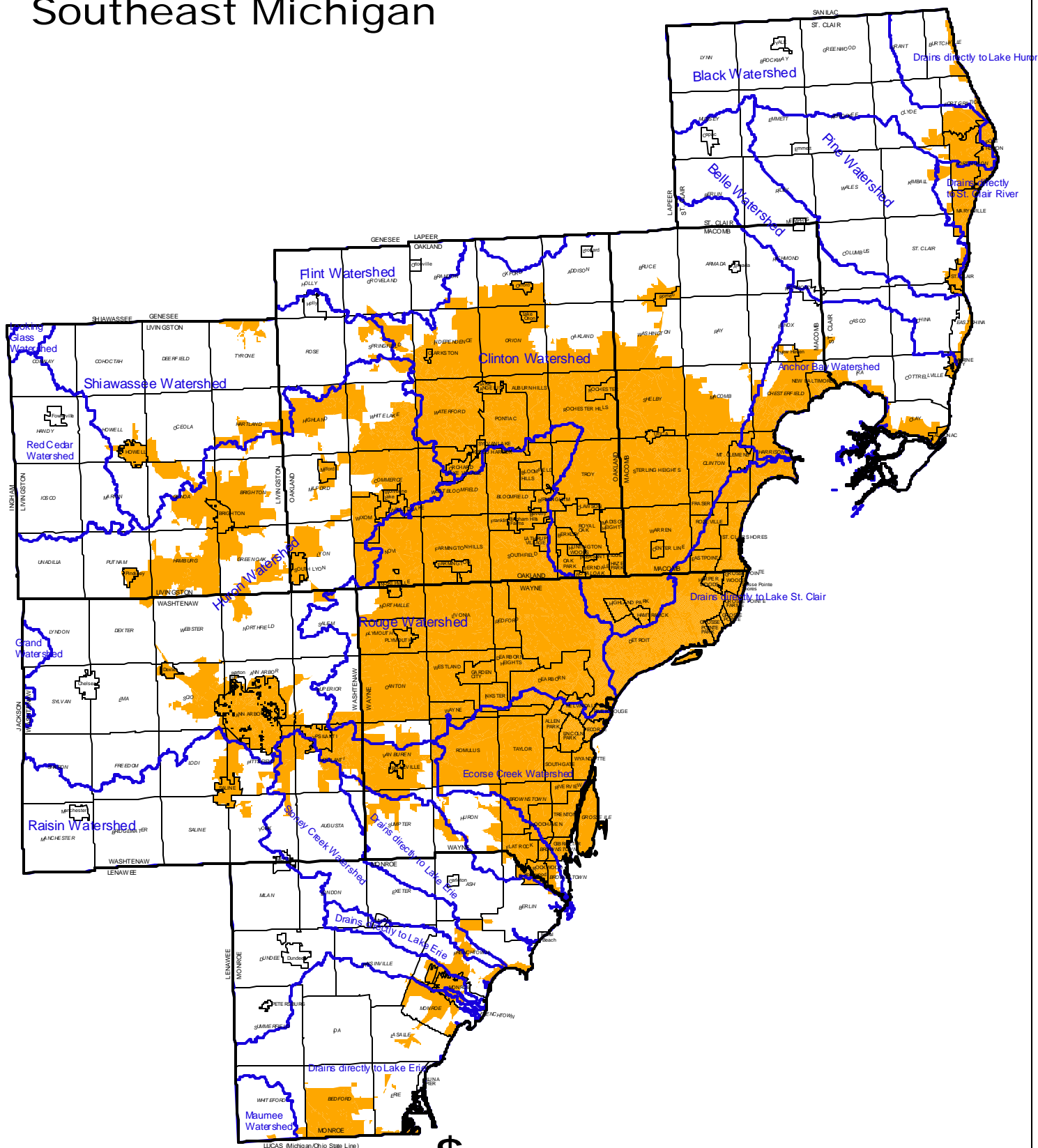
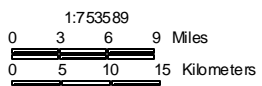


# Areas Needing a Storm Water Permit Southeast Michigan



LUCAS (Michigan/Ohio State Line)



State Plane NAD83  
May 2002



Southeast Michigan Council of Governments  
535 Griswold Street, Suite 300, Detroit, MI 48226-3602  
Phone 313-961-4266, Fax 313-961-4869  
www.semco.org

Data Source:  
Areas needing storm water permits are based on the  
1990 and 2000 U.S. Census Urbanized Area.

Combined sewer areas are excluded from designation,  
but are not shown on this map.