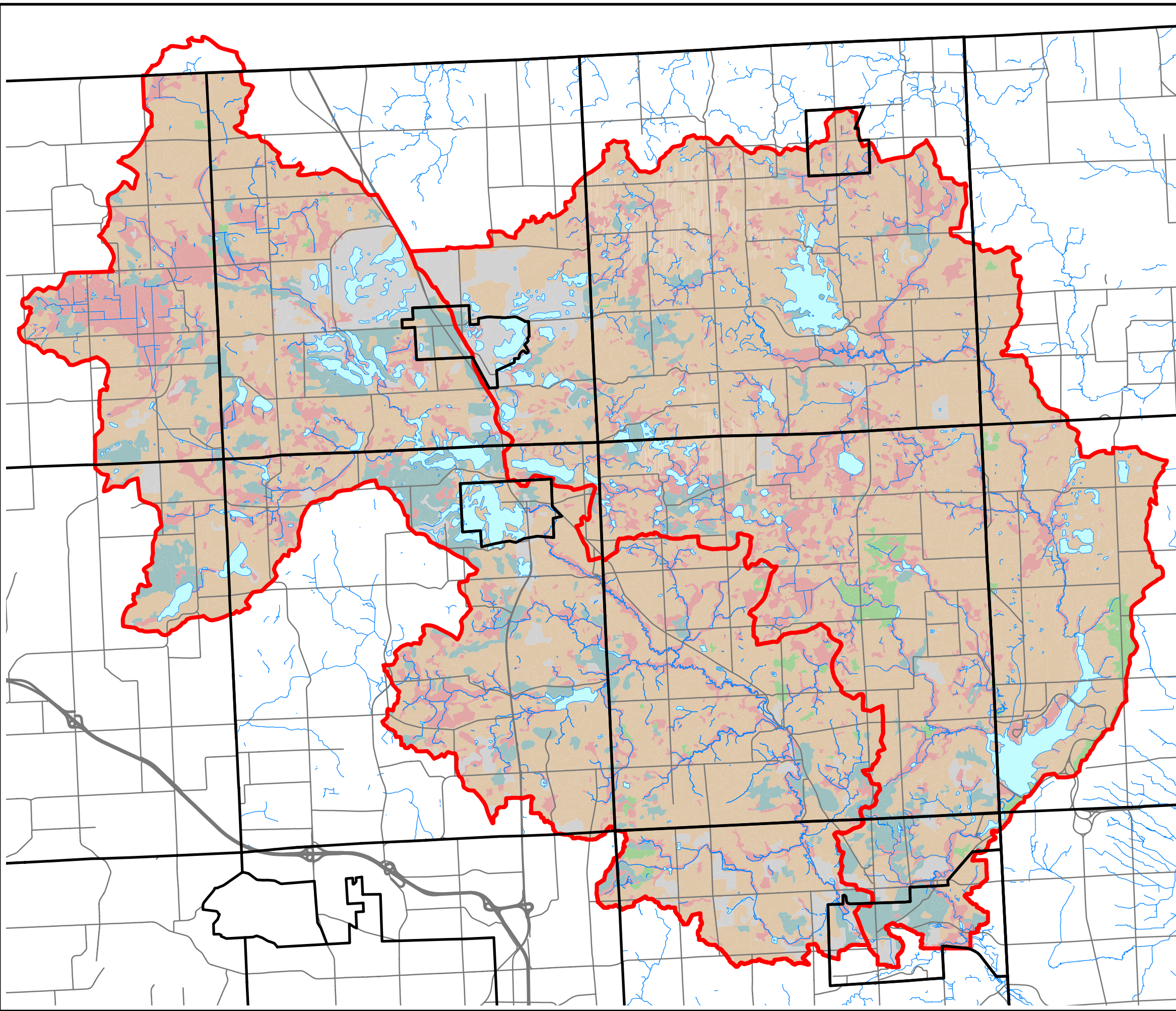







# Stony/Paint Creek Subwatershed

## Figure 3.13. Hydrological Soil Groups



-  Group A - Sand, loamy sand, sandy loam (High infiltration rate)
-  Group B - Silt loam or loam (Moderate infiltration rate)
-  Group C - Sandy clay loam (Slow infiltration rate)
-  Group D - Clay loam, silty clay loam, sandy clay, silty clay or clay (Very slow infiltration rate)
-  Urban Land, Pits, Disturbed Soils

Note : Permeability is estimated for Macomb County

DATA SOURCE : Oakland County and Macomb County Planning Departments

4000 0 4000 8000 12000 Feet



Carlisle/Wortman Associates, Inc.  
Community Planners & Landscape Architects  
Plot Generation : 11/21/05

