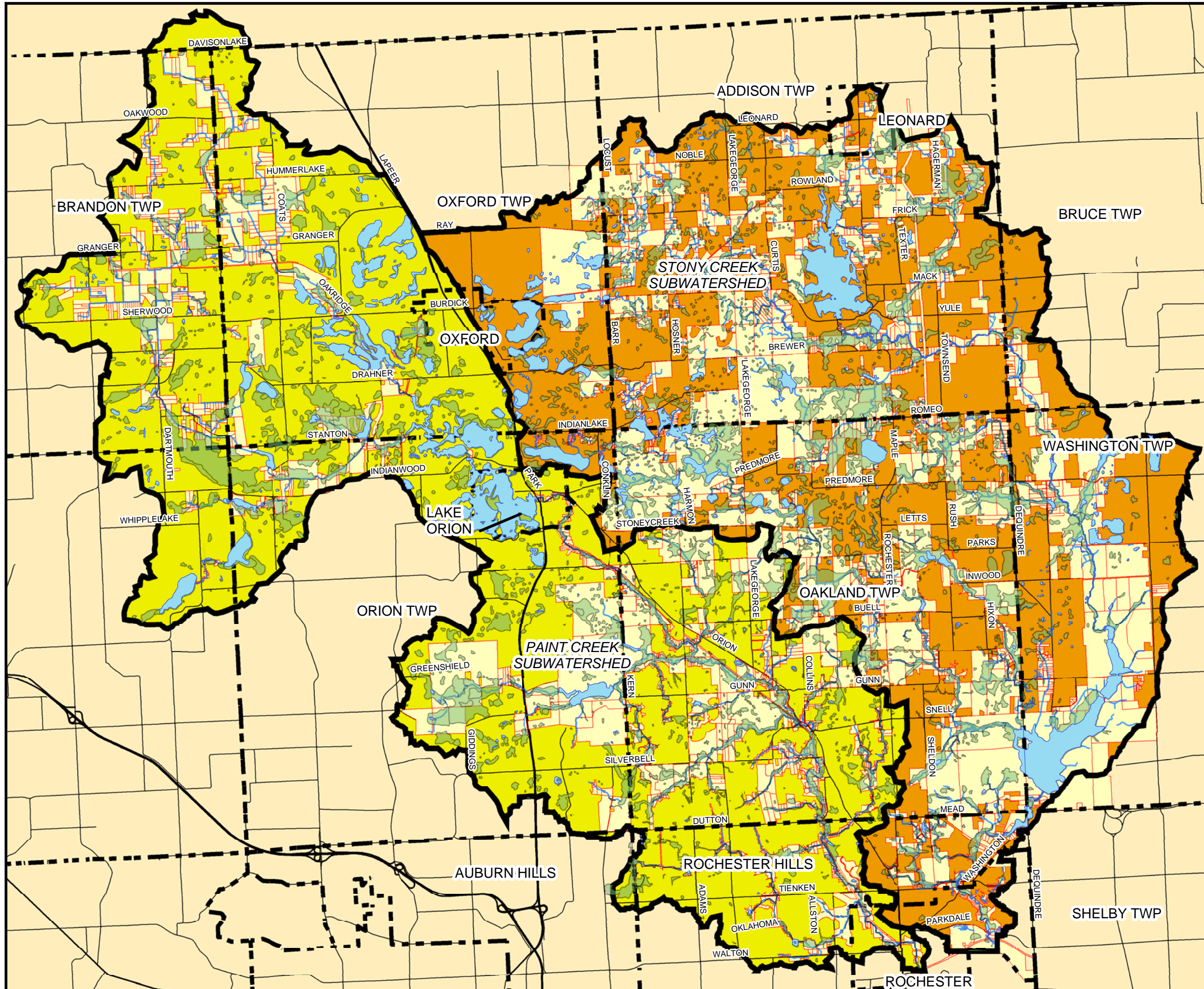










# Stony/Paint Creek Subwatershed

## Figure 3.16 Critical Areas & Wetlands



-  Water Course
  -  Road
  -  Community Border
  -  Lake
  -  Potential Wetland
  -  Critical Area
- Subwatershed**
-  Stony Creek
  -  Paint Creek



9-26-05

0 4,000 8,000 16,000

1" = 8000'

MAP DATA PROVIDED BY: OAKLAND COUNTY AND MACOMB COUNTY

WETLAND DATA PROVIDED BY: NWI, OAKLAND TOWNSHIP AND ROCHESTER HILLS BY NISWANDER ENVIRONMENTAL

CRITICAL AREAS DERIVED FROM ECT ASSESSMENT 2005, POLLUTANT LOADING MODEL, MACROINVERTEBRATE SURVEY, ROAD CROSSING SURVEY AND BEHI SURVEY

...CRWC-PAINT CREEK/STONY PAINT SUBWATERSHED, SUBWATERSHED PLAN/WMP UPDATED MAPS, CRITICAL AREAS WITH WETLANDS 092605 11X17.MXD

**ECT**  
Environmental Consulting & Technology, Inc.

501 AVIS DRIVE, STE 5C  
ANN ARBOR, MI 48108

TEL: (734) 769-3004  
FAX: (734) 769-3164  
www.ectinc.com