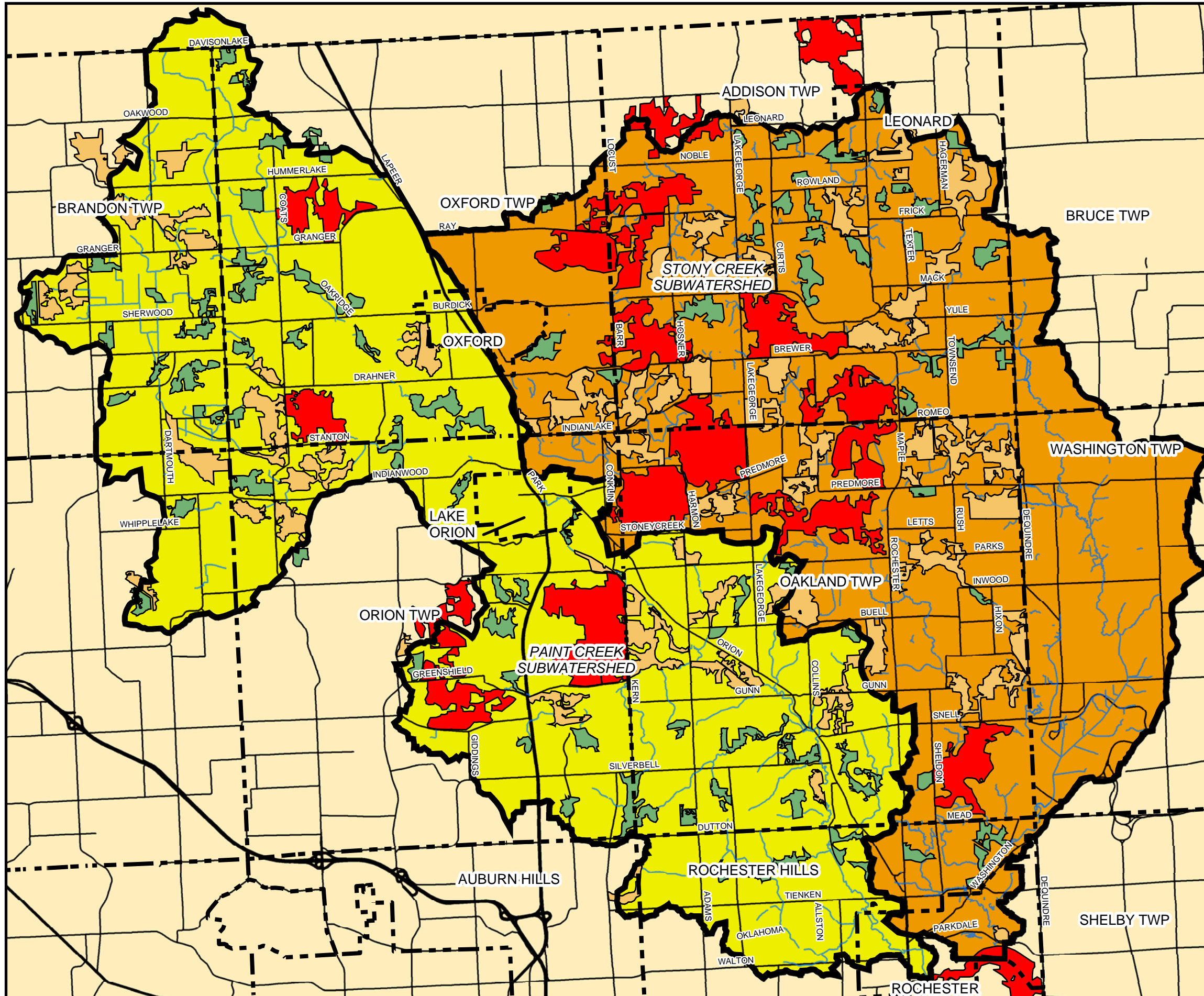


Stony/Paint Creek Subwatershed

Figure 3.4 MNFI Natural Areas



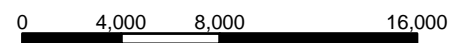
— Water Course
 Road
 Community Border
 Lake

Subwatershed
 Stony Creek
 Paint Creek

Michigan Natural Features Inventory
 Priority One
 Priority Two
 Priority Three



9-26-05



1" = 8000'

MAP DATA PROVIDED BY: OAKLAND COUNTY AND MACOMB COUNTY

ECT
 Environmental Consulting & Technology, Inc.

501 AVIS DRIVE, STE 5C
 ANN ARBOR, MI 48108

TEL: (734) 769-3004
 FAX: (734) 769-3164
 www.ectinc.com

...CRWC-PAINT CREEK/STONY PAINT SUBWATERSHED, SUBWATERSHED PLAN/WMP UPDATED MAPS, MNFI MAP 092805 11X17.MXD