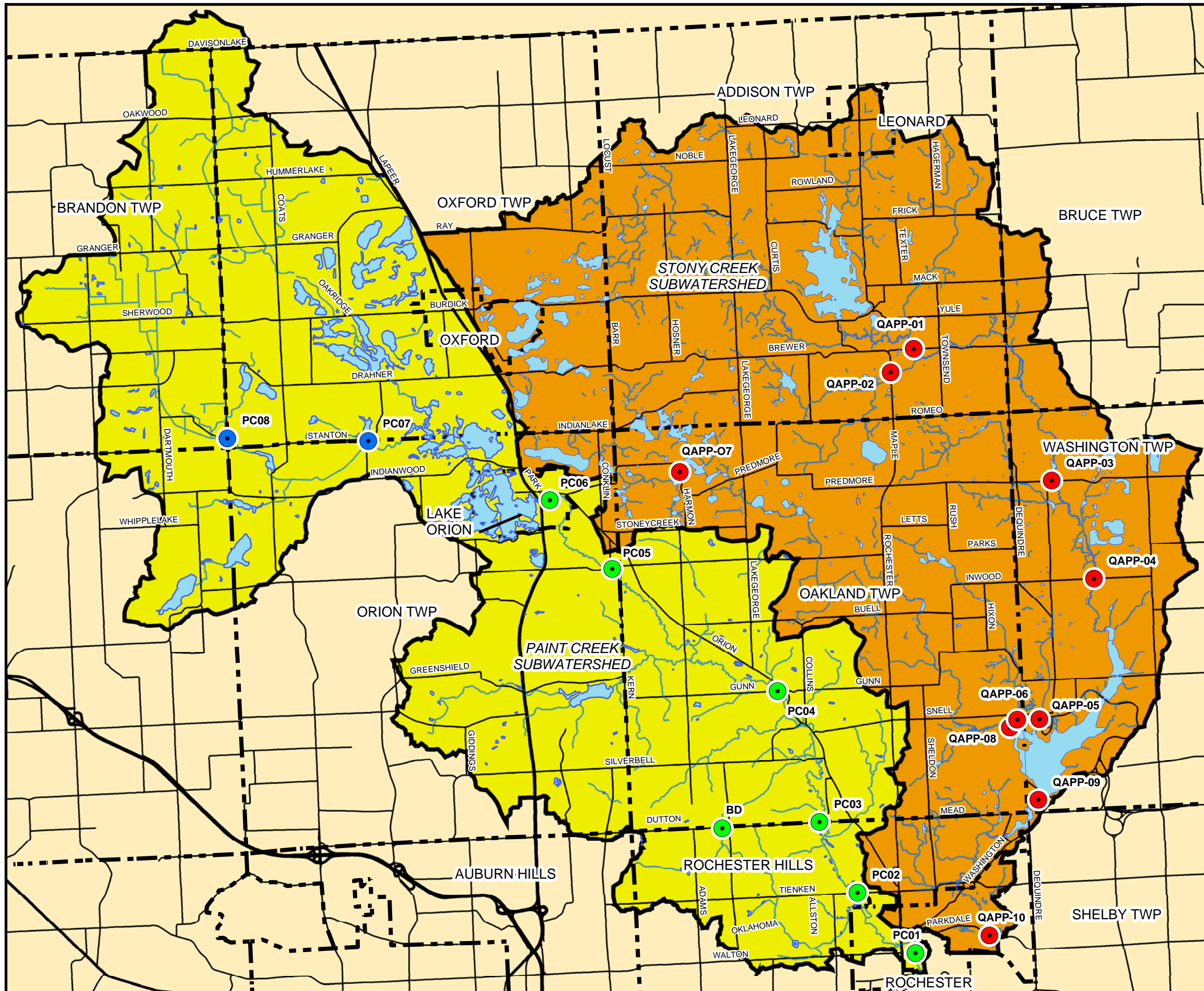


Stony/Paint Creek Subwatershed

Figure 3.7 Macroinvertebrate Survey Sites



- Water Course
- Road
- Community Border
- Lake

- Subwatershed**
- Stony Creek
 - Paint Creek

- Volunteer Surveys 1999 - 2004
- Tilton & Associates, Inc 2003
- Environmental Consulting & Technology, Inc 2004



9-26-05
 0 4,000 8,000 16,000
 1" = 8000'

DATA SOURCE:
 BASE DATA PROVIDED BY OAKLAND
 AND MACOMB COUNTIES
 MACRO DATA PROVIDED BY ECT AND
 CRWC VOLUNTEER SURVEYS

ECT
 Environmental Consulting & Technology, Inc.
 501 AVIS DRIVE, STE 5C
 ANN ARBOR, MI 48108
 TEL: (734) 769-3004
 FAX: (734) 769-3164
 www.ectinc.com

...CRWC-PAINT CREEK/STONY PAINT SUBWATERSHED,
 SUBWATERSHED PLAN/WMP UPDATED MAPS,
 MACRO RANKING_092605 11X17.MXD