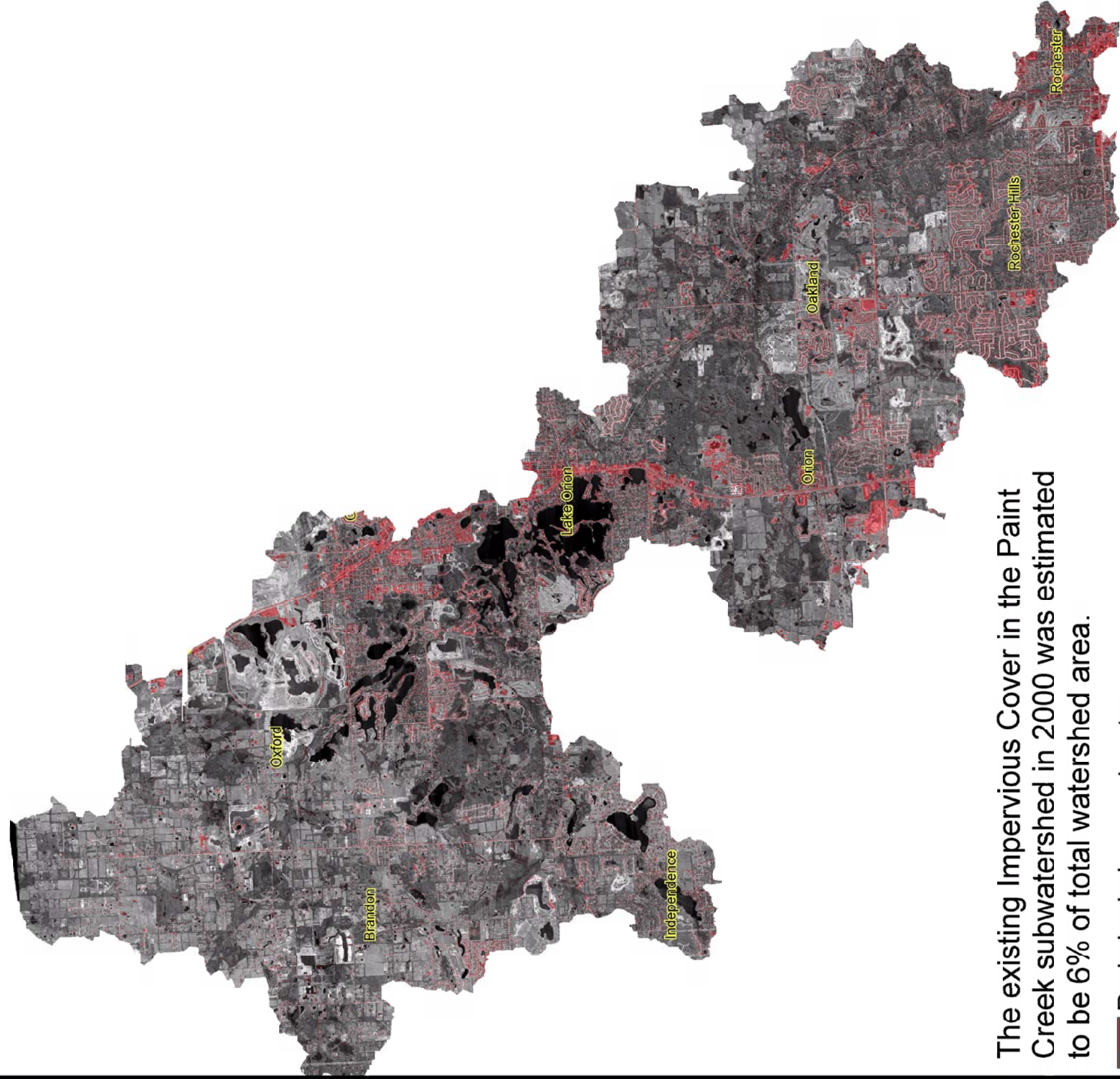



Impervious Surfaces in Paint Creek Subwatershed 2000



The existing Impervious Cover in the Paint Creek subwatershed in 2000 was estimated to be 6% of total watershed area.

 Red-shaded areas denote areas of impervious surface

Source: Oakland County Color-Infrared photography from the spring of 2000

Stony/Paint Creek Subwatershed

Figure 4.3 Estimated Percent Impervious Surface in Paint Creek



9-26-05

MAP DATA PROVIDED BY: OAKLAND COUNTY

ECT
Environmental Consulting & Technology, Inc.

501 AVIS DRIVE, STE 5C
ANN ARBOR, MI 48108

TEL: (734) 769-3004
FAX: (734) 769-3164
www.ectinc.com

...CRWC-PAINT CREEK\STONY PAINT SUBWATERSHED\
SUBWATERSHED PLAN\WMP UPDATED MAPS\
pc impervious surface_092605 11X17.MXD