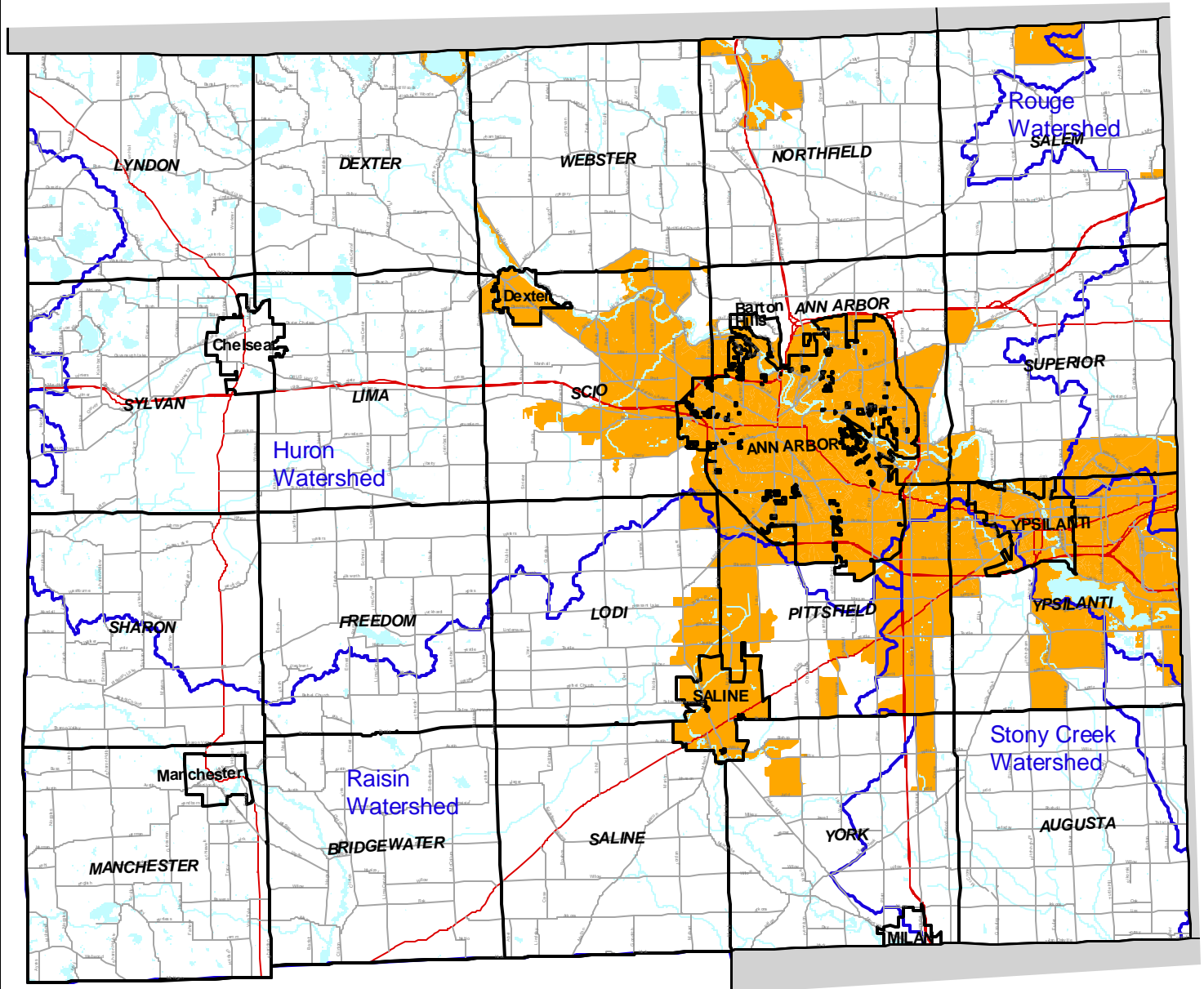


Areas Needing a Storm Water Permit Washtenaw County



1:237202



Slate Plane NAD83
May 2002

SEMCOG

Southeast Michigan Council of Governments
535 Griswold Street, Suite 300, Detroit, MI 48226-3602
Phone 313-961-4266, Fax 313-961-4669
www.semco.org

Data Source:
Areas needing a storm water permit are based on 1990 and 2000 Urbanized Areas which are determined by U.S. Census Bureau.

Combined Sewer Systems are excluded from designation, but are not shown on this map.