



# CRWC

CLINTON RIVER WATERSHED COUNCIL



# DO IT YOURSELF RAIN BARREL

Using a rain barrel is a great way to take advantage of the stormwater that comes off of your roof. You can use the collected rainwater to water your lawn and your gardens! This prevents excess water from traveling over the ground and bringing pollutants to local waterways through storm drains.

## PARTS NEEDED

- 55 Gallon food grade drum
- 3/4" thread hose barb for 1/2" inner diameter hose x2
- 5/8" Thread hose barb for 1/2" inner diameter hose
- 1/2" inner diameter vinyl hose (4 ft section and enough for your specific application)
- Hose clamps to fit vinyl hose outer diameter x2
- PVC pipe sealant
- Teflon tape
- 4" Atrium grate
- 7" Diameter screen material (for mosquito control)
- Optional: 2"x3" Flex-elbow downspout
- You can connect your rain barrel to your downspout however you like, but we've found this works well.

## HOW TO ASSEMBLE A RAIN BARREL

1. Drill 2, 3/4" holes:
  - first hole: 2"-3" above the bottom for hose
  - second hole: 2" from top for overflow
2. Thread 3/4" hose barbs into top and bottom holes to check fit, then remove
3. Apply Teflon tape and PVC pipe sealant to both barb threads.
4. Completely thread barbs into holes. Let dry for 24 hrs.
5. Cut 4" diameter hole in center of top of barrel
6. Insert atrium grate into the hole so that it is nested inside of the barrel
7. Lay screen over spout adapter over grate and trim screen to size
8. Attach hose to lower barb with hose clamp
9. Attach 5/8" hose barb to free end of vinyl hose with hose clamp (garden hose would be attached to this end).

## TOOLS NEEDED

- Drill
- 3/4" hole saw bit
- 4" hole saw bit, jig saw or equivalent
- Flat screwdriver
- Scissors
- Pliers

Example with spigot in place of bottom hose

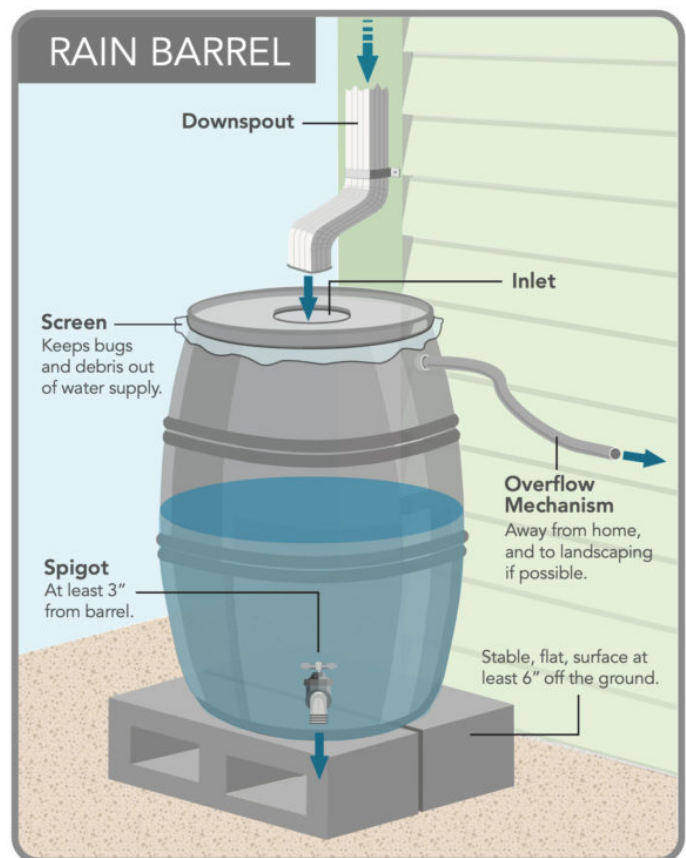


Image courtesy of the City of Palo Alto Stormwater Program

VISIT US AT [CRWC.ORG](http://CRWC.ORG)



@CLINTONRIVERWATERSHED



CLINTON RIVER WATERSHED COUNCIL



MICHIGAN DEPARTMENT OF ENVIRONMENT, GREAT LAKES, AND ENERGY

This project has been funded wholly or in part through Michigan Department of Environment, Great Lakes, and Energy's Nonpoint Source Program using Watershed Council Support funds.